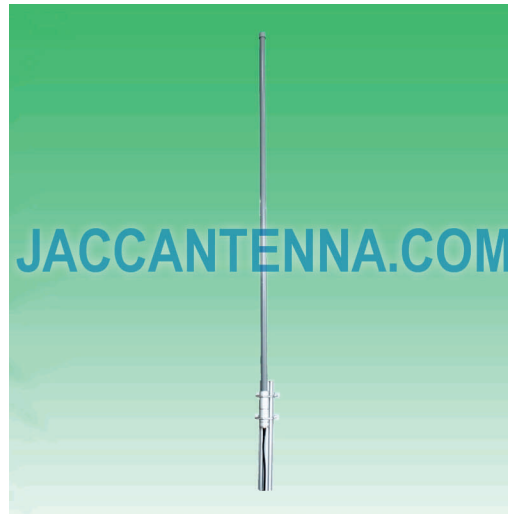


J1921O10 1920-2170 MHz 10 dBi Vertical Polarization Omni Antenna



Antenna Model No.	J1921O10
Frequency Range	1920 - 2170 MHz
Bandwidth	250 MHz
Gain	10 dBi
Horizontal Beamwidth	360°
Vertical Beamwidth	20°
VSWR	≤ 1.5
Nominal Impedance	50 Ohms
Maximum Power	100 Watts
Polarization	Vertical
Connector	N Female
Length (Height)	39.4" / 1000 mm
Wind Load	120 mph / 60 m/s
Radome	Fiberglass
Mast Mount Diameter	1.6" - 2.0" / 40 - 50 mm
Operating Temperature	-22°F to 140°F / -30°C to 60°C

