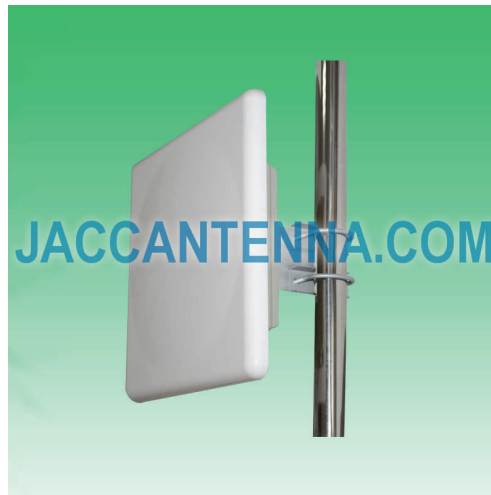


J5158MME15-VPx1-HPx2 MIMO 5150-5850 MHz 15 dBi 1xV-POL 2xH-POL Enclosure Antenna



| | |
|------------------------------|--|
| Antenna Model No. | J5158MME15-VPx1-HPx2 |
| Frequency Range | 5150 - 5850 MHz |
| Bandwidth | 700 MHz |
| Gain | 3x 15 dBi |
| Horizontal Beamwidth | 43° |
| Vertical Beamwidth | 30° |
| Front-to-Back Ratio | ≥ 20 dB |
| VSWR | ≤ 2.0 |
| Nominal Impedance | 50 Ohms |
| Maximum Power | 100 Watts |
| Polarization | 1x Vertical Polarization 2x Horizontal Polarization |
| Connectors | 3x N Female |
| Dimensions | 13.0" x 13.0" x 4.3" / 330 x 330 x 110 mm |
| Weight | 4.4 lbs / 2.0 kg |
| Wind Load | 120 mph / 60 m/s |
| Radome | ABS |
| Mast Mount Diameter | 1.6" - 2.0" / 40 - 50 mm |
| Operating Temperature | -22°F to 140°F / -30°C to 60°C |

